

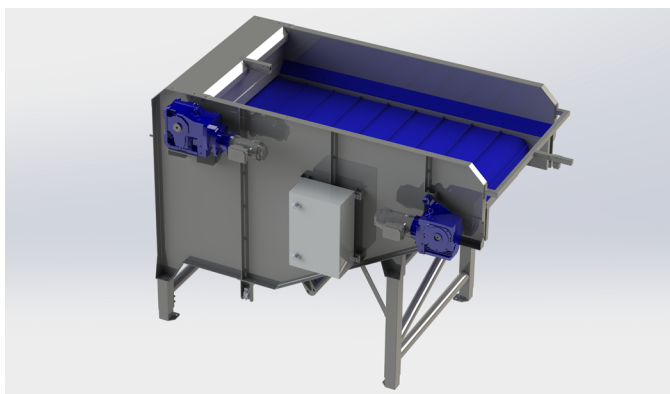


## Even-flow

MT-Even-flow is designed for potatoes, carrots, parsnips, celeriac, red beets etc.

The machine is made of stainless steel with plastic conveyors; the design is made so that everything is easy to clean.

The dimensions are scalable both in width and length. For example, a machine for 1,000 KG buffering has the dimensions of approximately 2,500 x 1,000 x 1,500 mm.



This machine is equipped with a vertically movable conveyor belt with carriers; the belt moves up and down with the product flow. This has the advantage that the drop height is minimal, and the product cannot be damaged by fall.

The dimensions are scalable depending on the desired buffer capacity. The drive is with a shaft-mounted gearbox and the bearing arrangement is heavy duty, food safe grease-filled bearing housings.

The motors are equipped with stainless steel protective covers so the motors are well protected for high pressure cleaning and wet/damp conditions.

### BRAND



### SPECIFICATIONS

NAME	Even-Flow
CAPACITY	1 ton/hour, scalable
DIMENSIONS	Approx. 2.500 x 1.000 x 1.500 mm
INPUT HEIGHT	2.000 mm
OUTPUT HEIGHT	2.250 mm



We have the expertise